

SYMBOL LIST	
SYMBOL	DESCRIPTION
	EF = EXTRACT FAN (EF) - SUPPLY AIR FAN (SFF) SUPPLY AIR FAN WITH FILTER (SFF), DIFFUSER (D) TRANSFER GRILLE (TG) OR LINEAR GRILLE b = CODE OF FAN, DIFFUSER OR LINEAR GRILLE a = AIR FLOW IN l/s
	U = UNIT TAG (CCU = CEILING CASSETTE OR WMU = WALL MOUNTED UNIT) * = TAG ID + = AC CODE
	CEILING CASSETTE UNIT (CCU)
	UNDER CEILING CASSETTE UNIT (UCCU)
	HIGH WALL MOUNTED SPLIT AC UNIT (HWSU)
	OUTDOOR UNIT (OU)
	OUTDOOR CONDENSING UNIT (OCU)
	SPRIGOT WITH FLEXIBLE DUCT
	CEILING EXTRACT FAN (CEF)
	SQUARE CEILING SUPPLY AIR GRILLE
	SQUARE CEILING DIFFUSER OR GRILLE
	SQUARE CEILING RETURN AIR GRILLE
	CONTROLLER
	REFRIGERATION PIPING
	DRAIN PIPING
	CONTROL WIRING
	DOOR GRILLE (DG)
	RISER
	DROPPER

- NOTES**
1. ANY DISCREPANCIES AND AMBIGUITIES ON THIS DRAWING TO BE REPORTED TO THE ENGINEER.
  2. THIS DRAWING MUST BE READ WITH THE RELEVANT ARCHITECT'S DRAWINGS. SEE ARCHITECT'S DRAWINGS, FOR SANITARY FITTING SCHEDULE.
  3. ALL DIMENSIONS TO BE CHECKED ON SITE (BY SUB-CONTRACTOR), BEFORE ANY WORK COMMENCES. DO NOT SCALE DIMENSIONS.
  4. NO UNSPECIFIED DRILLING, CHASING OR CUTTING OF STRUCTURAL MEMBERS IS PERMITTED, UNLESS APPROVED BY THE STRUCTURAL ENGINEER.
  5. ALL uPVC PIPES TO BE UNDERGROUND.
  6. ALL PLUMBING INSTALLATIONS SHALL CONFORM TO SABS 0252.
  7. NO WATER POINT TO BE WITH-IN 1m OF ANY POWER POINT AND/OR DB BOARD.
  8. UNDERGROUND PIPING TO BE HDPE CLASS 10 AND uPVC CLASS 12.
  9. ALL BURIED UNDERGROUND STEEL PIPEWORK AND FITTINGS SHALL BE WRAPPED IN DENSO TAPE

**FOR BIDDING PURPOSES ONLY**

No.	REVISIONS	ENG.	DATE

ARCHITECT

**Chigama Architects**  
P.O. Box 11257  
WINDHOEK, NAMIBIA  
TEL: (061) 259 125  
kuda@chigamaarch.com

QUANTITY SURVEYOR

**Jordan Oshagan Nampole**  
P.O. Box 90680  
WINDHOEK, NAMIBIA  
TEL: (061) 220 081  
info@ongqs.com

CIVIL & STRUCTURAL ENGINEERS

**DEKA CONSULTING ENGINEERS**  
P.O. Box 21744  
Tel: 061 220 959  
Fax: 061 220 992  
E-mail: info@dekaconsult.com  
WINDHOEK

ELEC & MECH. ENGINEERS:

**DEKA CONSULTING ENGINEERS**  
P.O. Box 21744  
Tel: 061 220 959  
Fax: 061 220 992  
E-mail: info@dekaconsult.com  
WINDHOEK

**DESIGN**

DESIGNED	LH	01/24	DRAWN	IN	01/24
PROFESSIONAL ENGINEER	RH				

CLIENT:

**NAMIBIA REVENUE AGENCY**  
10 JOHN MEINERT & MOKETE STREET, WINDHOEK  
TEL: (061) 209 2259

DISCIPLINE: MECHANICAL

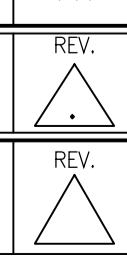
PROJECT TITLE:  
**REFURBISHMENT OF TRANS KALAHARI BORDER TO A ONE STOP BORDER POST**

DRAWING TITLE:  
**PASSENGER TERMINAL HVAC LAYOUT**

SCALE: 1 : 200

CONSULTANT DRAWING NO.: **D0121/M7-01**

CLIENT DRAWING NO.:



NOTES

1. ANY DISCREPANCIES AND AMBIGUITIES ON THIS DRAWING TO BE REPORTED TO THE ENGINEER.
2. THIS DRAWING MUST BE READ WITH THE RELEVANT ARCHITECT'S DRAWINGS. SEE ARCHITECT'S DRAWINGS, FOR SANITARY FITTING SCHEDULE.
3. ALL DIMENSIONS TO BE CHECKED ON SITE (BY SUB-CONTRACTOR), BEFORE ANY WORK COMMENCES. DO NOT SCALE DIMENSIONS.
4. NO UNSPECIFIED DRILLING, CHASING OR CUTTING OF STRUCTURAL MEMBERS IS PERMITTED, UNLESS APPROVED BY THE STRUCTURAL ENGINEER.
5. ALL uPVC PIPES TO BE UNDERGROUND.
6. ALL PLUMBING INSTALLATIONS SHALL CONFORM TO SABS 0252.
7. NO WATER POINT TO BE WITH-IN 1m OF ANY POWER POINT AND/OR DB BOARD.
8. UNDERGROUND PIPING TO BE HDPE CLASS 10 AND uPVC CLASS 12.
9. ALL BURIED UNDERGROUND STEEL PIPEWORK AND FITTINGS SHALL BE WRAPPED IN DENSO TAPE

FOR BIDDING PURPOSES ONLY

No.	REVISIONS	ENG.	DATE

ARCHITECT



P.O. Box 11257  
WINDHOEK, NAMIBIA  
TEL: (061) 259 125  
kuda@chigamaarch.com

QUANTITY SURVEYOR



P.O. Box 90680  
WINDHOEK, NAMIBIA  
TEL: (061) 220 081  
info@jongs.com

CIVIL & STRUCTURAL ENGINEERS



P.O. Box 21744  
Tel: 061 220 959  
Fax: 061 220 992  
E-mail: info@dekaconsult.com  
WINDHOEK


ELEC. & MECH. ENGINEERS:



P.O. Box 21744  
Tel: 061 220 959  
Fax: 061 220 992  
E-mail: info@dekaconsult.com  
WINDHOEK

DESIGN					
DESIGNED	LH	01/24	DRAWN	IN	01/24
PROFESSIONAL ENGINEER			RH		

CLIENT:



**NAMIBIA REVENUE AGENCY**  
10 JOHN MEINERT & MOKTE STREET, WINDHOEK  
TEL: (061) 209 2259

DISCIPLINE: MECHANICAL

PROJECT TITLE:  
REFURBISHMENT OF TRANS KALAHARI BORDER TO A ONE STOP BORDER POST

DRAWING TITLE:  
PASSENGER TERMINAL HVAC LAYOUT

SCALE: 1 : 200 A1

CONSULTANT DRAWING NO.: D0121/M7-01A

CLIENT DRAWING NO.:

ZONE 1							
TAG ID NO.	DESCRIPTION	AREA (m2)	UNIT TAG	AC RATING(W/m2)	COOLING CAPACITY	AVAILABLE UNIT(kW)	PRODUCT
WMU1.01	NAMRA OFFICE 1	12	WMU	0.2	2.4	3.6	-
WMU1.01	NAMRA OFFICE 2	16	WMU	0.2	3.2	3.6	-
WMU1.01	NAMRA OFFICE 3	12	WMU	0.2	2.4	3.6	-
WMU1.01	NAMRA OFFICE 4	12	WMU	0.2	2.4	3.6	-
WMU1.01	NAMRA OFFICE 5	12	WMU	0.2	2.4	3.6	-
WMU1.01	NAMRA OFFICE 6	12	WMU	0.2	2.4	3.6	-
CCU1.01	NAMRA MEETING RM	51.1	CCU	0.2	5.11	5.6	-
CCU1.01	NAMRA MEETING RM	51.1	CCU	0.2	5.11	5.6	-

WMU - Wall Mounted Split  
CCU - Round Flow Ceiling Mounted Cassette

Compressor Plant		
Code	Capacity (kW <sub>n</sub> )	Electrical Requirements
Effective at local conditions. Refer to Tender.		
Z-1.1	32.8 kW	3ø, 380V Starting 85 Running 21.3 Circuit 31.5

ZONE 2							
TAG ID NO.	DESCRIPTION	AREA (m2)	UNIT TYPE	AC RATING(W/m2)	COOLING CAPACITY	AVAILABLE UNIT(kW)	PRODUCT
WMU2.02	NAMRA OFFICE 1	12	WMU	0.2	2.4	3.6	-
WMU2.02	NAMRA OFFICE 2	12	WMU	0.2	2.4	3.6	-
WMU2.02	NAMRA OFFICE 3	12	WMU	0.2	2.4	3.6	-
WMU2.02	NAMRA OFFICE 4	12	WMU	0.2	2.4	3.6	-
WMU2.02	NAMRA OFFICE 5	16.4	WMU	0.2	3.28	3.6	-
WMU2.02	NAMRA OFFICE 6	14	WMU	0.2	2.8	3.6	-
WMU2.02	NAMRA OFFICE 7	12	WMU	0.2	2.4	3.6	-

WMU - Wall Mounted Split  
CCU - Round Flow Ceiling Mounted Cassette

Compressor Plant		
Code	Capacity (kW <sub>n</sub> )	Electrical Requirements
Effective at local conditions. Refer to Tender.		
Z-1.2	25.2 kW	3ø, 380V Starting 85 Running 21.3 Circuit 31.5

ZONE 3							
TAG ID NO.	DESCRIPTION	AREA (m2)	UNIT TYPE	AC RATING(W/m2)	COOLING CAPACITY	AVAILABLE UNIT(kW)	PRODUCT
WMU3.03	OFFICE 3.1	12	WMU	0.2	2.4	3.6	-
WMU3.03	OFFICE 3.2	12	WMU	0.2	2.4	3.6	-
WMU3.03	OFFICE 3.2	12	WMU	0.2	2.4	3.6	-
WMU3.03	OFFICE 3.3	12	WMU	0.2	2.4	3.6	-
WMU3.03	OFFICE 3.4	16	WMU	0.2	3.2	3.6	-
WMU3.03	OFFICE 3.5	12	WMU	0.2	2.4	3.6	-

WMU - Wall Mounted Split  
CCU - Round Flow Ceiling Mounted Cassette

Compressor Plant		
Code	Capacity (kW <sub>n</sub> )	Electrical Requirements
Effective at local conditions. Refer to Tender.		
Z-1.3	15.2 kW	3ø, 380V Starting 85 Running 21.3

ZONE 4							
TAG ID NO.	DESCRIPTION	AREA (m2)	UNIT TAG	AC RATING(W/m2)	COOLING CAPACITY	AVAILABLE UNIT(kW)	PRODUCT
CCU4.04	NAMPOL	14.1	CCU	0.2	2.82	3.6	-
CCU4.04	FIRST AID RM	11.7	CCU	0.2	2.34	3.6	-
WMU4.04	RFA	7.6	CCU	0.2	1.52	3.6	-
CCU4.04	CUSTOMS	15.4	CCU	0.2	3.08	3.6	-
CCU4.04	IMMIGRATION	31	CCU	0.2	3.1	3.6	-
CCU4.05	IMMIGRATION	31	CCU	0.2	3.1	3.6	-
WMU4.05	CONSULTATION	11.5	CCU	1.2	4.6	3.6	-

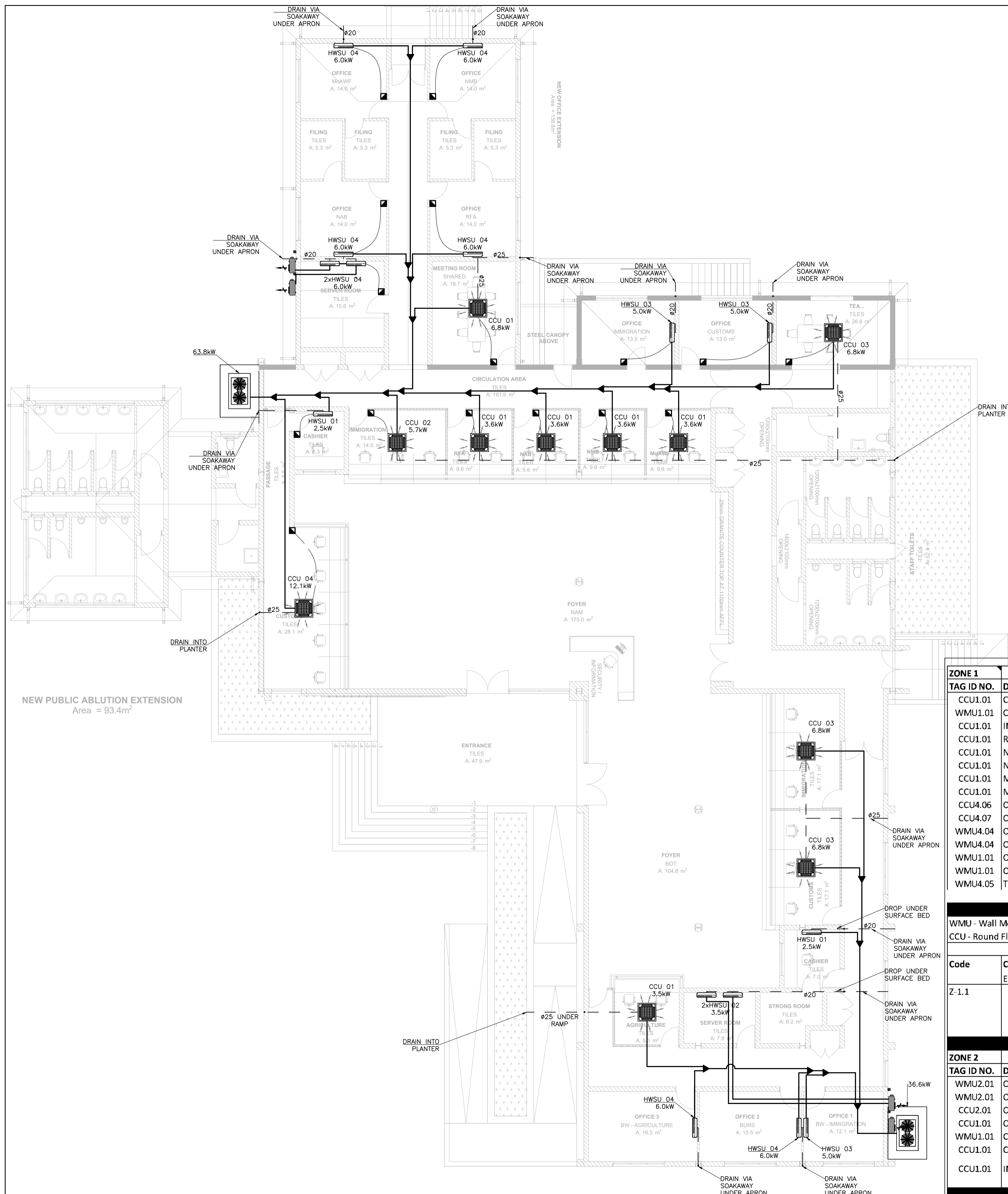
WMU - Wall Mounted Split  
CCU - Round Flow Ceiling Mounted Cassette

Compressor Plant		
Code	Capacity (kW <sub>n</sub> )	Electrical Requirements
Effective at local conditions. Refer to Tender.		
Z-1.1	21.6 kW	3ø, 380V Starting 85 Running 21.3 Circuit 31.5

ZONE 5							
TAG ID NO.	DESCRIPTION	AREA (m2)	UNIT TYPE	AC RATING(W/m2)	COOLING CAPACITY	AVAILABLE UNIT(kW)	PRODUCT
WMU5.05	CASHIER	7.6	WMU	0.2	1.52	3.6	-
CCU5.05	CUSTOMS	15.4	CCU	0.2	3.08	3.6	-
CCU5.05	IMMIGRATION	31	CCU	0.2	3.1	3.6	-
CCU5.05	IMMIGRATION	31	CCU	0.2	3.1	3.6	-
WMU5.05	CONSULTATION	10.5	CCU	0.2	2.1	3.6	-

WMU - Wall Mounted Split  
CCU - Round Flow Ceiling Mounted Cassette

Compressor Plant		
Code	Capacity (kW <sub>n</sub> )	Electrical Requirements
Effective at local conditions. Refer to Tender.		
Z-1.2	18.0 kW	3ø, 380V Starting 85 Running 21.3 Circuit 31.5



- ### NOTES
1. ANY DISCREPANCIES AND AMBIGUITIES ON THIS DRAWING TO BE REPORTED TO THE ENGINEER.
  2. THIS DRAWING MUST BE READ WITH THE RELEVANT ARCHITECT'S DRAWINGS. SEE ARCHITECT'S DRAWINGS, FOR SANITARY FITTING SCHEDULE.
  3. ALL DIMENSIONS TO BE CHECKED ON SITE (BY SUB-CONTRACTOR), BEFORE ANY WORK COMMENCES. DO NOT SCALE DIMENSIONS.
  4. NO UNSPECIFIED DRILLING, CHASING OR CUTTING OF STRUCTURAL MEMBERS IS PERMITTED, UNLESS APPROVED BY THE STRUCTURAL ENGINEER.
  5. ALL uPVC PIPES TO BE UNDERGROUND.
  6. ALL PLUMBING INSTALLATIONS SHALL CONFORM TO SABS 0252.
  7. NO WATER POINT TO BE WITH-IN 1m OF ANY POWER POINT AND/OR DB BOARD.
  8. UNDERGROUND PIPING TO BE HDPE CLASS 10 AND uPVC CLASS 12.
  9. ALL BURIED UNDERGROUND STEEL PIPEWORK AND FITTINGS SHALL BE WRAPPED IN DENSO TAPE

**FOR BIDDING PURPOSES ONLY**

No.	REVISIONS	ENG.	DATE

ARCHITECT

**Chigama Architects**  
P.O. Box 11257  
WINDHOEK, NAMIBIA  
TEL: (061) 259 125  
kuda@chigamaarch.com

QUANTITY SURVEYOR

*Jordan Oshaganu Nampe*  
P.O. Box 90680  
WINDHOEK, NAMIBIA  
TEL: (061) 220 081  
info@jongs.com

CIVIL & STRUCTURAL ENGINEERS

**DEKA CONSULTING ENGINEERS**  
P.O. Box 21744  
Tel: 061 220 959  
Fax: 061 220 992  
E-mail: info@dekaconsult.com  
WINDHOEK

ELEC & MECH. ENGINEERS:

**DEKA CONSULTING ENGINEERS**  
P.O. Box 21744  
Tel: 061 220 959  
Fax: 061 220 992  
E-mail: info@dekaconsult.com  
WINDHOEK

**DESIGN**

DESIGNED	LH	01/24	DRAWN	IN	01/24
----------	----	-------	-------	----	-------

PROFESSIONAL ENGINEER: RH

CLIENT:

**NamRA**  
Namibian Revenue Agency

**NAMIBIA REVENUE AGENCY**  
10 JOHN MEINERT & MOLKTE STREET, WINDHOEK  
TEL: (061) 209 2259

DISCIPLINE: MECHANICAL

PROJECT TITLE:  
**REFURBISHMENT OF TRANS KALAHARI BORDER TO A ONE STOP BORDER POST**

DRAWING TITLE:  
**COMMERCIAL TERMINAL HVAC LAYOUT**

SCALE:	1 : 200	A1
CONSULTANT DRAWING NO.:	<b>D0121/M7-02</b>	REV.
CLIENT DRAWING NO.:		REV.

ZONE 1							
TAG ID NO.	DESCRIPTION	AREA (m2)	UNIT TAG	AC RATING(W/m2)	COOLING CAPACITY	AVAILABLE UNIT(kw)	PRODUCT
CCU1.01	CUSTOMS	28.1	CCU	0.2	5.62	12.1	
WMU1.01	CASHIER	6.3	WMU	0.2	1.26	2.8	
CCU1.01	IMMIGRATION	14.5	CCU	0.2	2.9	5.7	
CCU1.01	RFA	9.6	CCU	0.2	1.92	3.6	
CCU1.01	NAB	9.6	CCU	0.2	1.92	3.6	
CCU1.01	NMB	9.6	CCU	0.2	1.92	3.6	
CCU1.01	MoAWF	9.6	CCU	0.2	1.92	3.6	
CCU1.01	MEETING ROOM	18.7	CCU	0.2	3.74	6.8	
CCU4.06	OFFICE NAB	14	WMU1.01	0.2	2.8	6	
CCU4.07	OFFICE RFA	14	WMU1.01	0.2	2.8	6	
WMU4.04	OFFICE MoAWF	14	CCU	0.2	2.8	6	
WMU4.04	OFFICE NMB	14	CCU	0.2	2.8	6	
WMU1.01	OFFICE IMMIGRATION	13.5	WMU	0.2	1.35	5	
WMU1.01	OFFICE CUSTOMS	13	WMU	0.2	1.3	5	
WMU4.05	TEA	26.6	CCU	1.2	10.64	6.8	

WMU - Wall Mounted Split  
CCU - Round Flow Ceiling Mounted Cassette

Compressor Plant		
Code	Capacity (kW <sub>r</sub> )	Electrical Requirements
Z-1.1	Effective at local conditions. Refer to Tender. 75.8 kW	3Ø, 380V Starting 85 Running 21.3 Circuit 31.5

ZONE 2							
TAG ID NO.	DESCRIPTION	AREA (m2)	UNIT TYPE	AC RATING(W/m2)	COOLING CAPACITY	AVAILABLE UNIT(kw)	PRODUCT
WMU2.01	OFFICE IMMIGRATION	12.1	WMU	0.2	2.42	5	
WMU2.01	OFFICE BURS	15.4	WMU	0.2	3.08	6	
CCU2.01	OFFICE AGRICULTURE	16.5	WMU	0.2	1.65	6	
CCU1.01	OFFICE AGRICULTURE	31	CCU	0.2	3.1	3.6	
WMU1.01	CASHIER	10.5	WMU	0.2	2.1	3.6	
CCU1.01	CUSTOM	17.1	CCU	0.2	3.42	6.8	
CCU1.01	IMMIGRATION	17.1	CCU	0.2	3.42	6.8	